

HIGH VOLUME WALMART SUPERCENTER, SAM'S CLUB, T.J. MAXX, PRIMANTI BROS.,... AND OVER A DOZEN OTHERS!



CURRENTLY AVAILABLE

- A4,5,6 +/- 4,800 Sq. Ft.
- *A19 +/- 1,200 Sq. Ft.
- A28 +/- 1,200- 2,400 Sq. Ft.
- A29, 30 +/- 3,090 Sq. Ft.
- *Currently occupied but can be made available

PROPERTY HIGHLIGHTS

- Easy access to the shopping center from I-99
- Centrally located with tremendous traffic
- Two traffic lights provide great accessibility into the center

LOCATION HIGHLIGHTS

- 2024 estimated average household income within 5 miles - \$79,983*
- 2024 estimated population within 5 miles - 64,058*

**Demographics obtained from Esri*



LEASING CONTACT

Vivienne Wraith
vwraith@gfdinc.com
222 Cloister Court
Chapel Hill, NC 27517



MORE INFO
www.gfdinc.com
919.448.1943



Scan this QR Code with your mobile phone's QR Reader to visit our website, and learn more about this property as well as others available for lease.



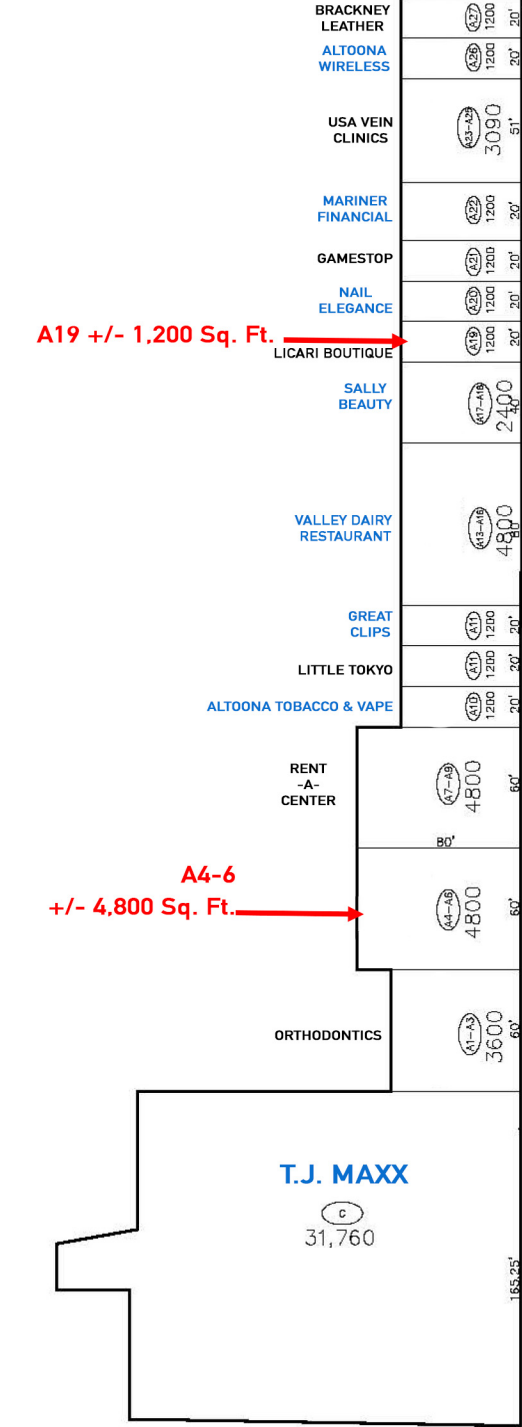
H&R BLOCK
ARMED FORCES CENTER

A29-30 +/- 3,090 Sq. Ft.

A28
+/- 1,200-2,400 Sq. Ft.

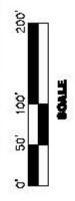
A19 +/- 1,200 Sq. Ft.

A4-6
+/- 4,800 Sq. Ft.



NOTE:
 THE SHOWN BUILDING FOOTPRINTS ARE THE APPROXIMATE LOCATIONS OF THE BUILDINGS. THE EXACT LOCATIONS OF THE BUILDINGS WILL BE DETERMINED BY THE PLANNING AND ENGINEERING DEPARTMENTS OF THE COUNTY OF ALTOONA. THE PLANNING AND ENGINEERING DEPARTMENTS OF THE COUNTY OF ALTOONA WILL BE RESPONSIBLE FOR THE FINAL DESIGN AND CONSTRUCTION OF THE BUILDINGS. THE COUNTY OF ALTOONA WILL BE RESPONSIBLE FOR THE FINAL DESIGN AND CONSTRUCTION OF THE BUILDINGS. THE COUNTY OF ALTOONA WILL BE RESPONSIBLE FOR THE FINAL DESIGN AND CONSTRUCTION OF THE BUILDINGS.

PLOT PLAN
PLANK ROAD COMMONS
 ALTOONA, BLAIR COUNTY, PENNSYLVANIA
GFD
MANAGEMENT INC.



DATE: 03/18/13
 REFERENCE: PP-1

